

Vmux-2120

Voice Trunking Gateway



- Unique TDMoIP multiplexing, with various voice compression algorithms, provides up to 16:1 compression for effective bandwidth utilization
- Two channelized uplink ports for point-to-multipoint voice trunking applications
- Fully transparent to signaling and telephony features
- Full system redundancy

Efficiently transmitting
up to 16 E1/T1 voice
trunks over TDM and
packet-switched
networks

TDMoIP®
Driven

Vmux-2120 is a carrier-class voice compression platform with E1/T1 voice ports, designed for voice trunking applications. As a voice trunking gateway, it compresses and transports up to 16 E1/T1 voice trunks over E1, T1 or IP links. Only 1U-high, Vmux-2120 is a compact unit that can be installed in 19-inch racks. The following security protocols are provided by Vmux-2120 to ensure client-server communication privacy and correct user authentication:

- RADIUS (client authentication only)
- SSH for Secure Shell communication session.

Vmux-2120 employs G.723.1, G.729 Annex A, AMR and G.711 compression algorithms, together with RAD's unique TDMoIP multiplexing, to transmit up to 496/384 voice channels, including transparent CAS and CCS, over a single E1, T1 or IP link.

Vmux-2120 is unique in that it is a single device able to transmit compressed voice over both TDM and IP networks. It can easily switch between the networks whenever this may be necessary or convenient.

Switching transmission between TDM and IP links does not require additional investments in equipment.



Vmux-2120

Voice Trunking Gateway

Voice Activity Detection (VAD) and silence suppression allow Vmux-2120 units to dynamically allocate bandwidth for voice traffic. This results in very efficient bandwidth usage, allowing more bandwidth for data transport.

Vmux-2120 supports relay of Group III fax. Alternatively, modem and fax data can be transmitted transparently (voice band data).

Vmux-2120 features two 10/100BaseT UTP Ethernet ports (Network and User) with optional autonegotiation support. The Ethernet ports operate at 10/100 Mbps speed, half- and full-duplex. The Ethernet interfaces comply with the IEEE 802.3 standard, supporting full autonegotiation according to 802.3x flow control for full-duplex, and backpressure option for half-duplex.

The Ethernet ports can also be used as two redundant uplink ports.

In addition to the default Ethernet ports (one network, one user), the device supports two E1/T1 uplinks that may be configured as redundant to each other and can both function as channelized uplinks. This enables the traffic from 16 user ports to be compressed to two TDM uplink ports in any flexible configuration, with a compression rate of 16:1.

DATA STREAM TRANSFER

Vmux-2120 transfers the following data streams that are not processed as voice:

- **Multiple HDLC channels** – Vmux-2120 supports 8 HDLC data streams per E1/T1. The data stream may occupy one or more timeslots. All CCS protocols, such as SS7, ISDN and QSIG, are supported.
- **SS7 channels** – Vmux-2120 supports up to two independent SS7 data streams per E1/T1. Each data stream may occupy one or more timeslots.
- **Transparent channels** – Vmux-2120 features transparent connection between n x 64 channels over IP and TDM networks, between two Vmux-2120 units or between Vmux-2120 and other Vmux units. Up to 8 timeslots per E1/T1 link can carry transparent data.

CHANNELIZED E1/T1 UPLINK

Vmux-2120 has a two-port channelized E1/T1 uplink. With this option, Vmux-2120 supports up to two E1/T1 ports for point-to-multipoint TDM applications.

BUNDLE CONNECTIVITY CHECK

Vmux-2120 checks voice bundle connectivity using TDMoIP OAM messages.

Q.50 & BANDWIDTH MANAGEMENT

Vmux-2120 employs two types of bandwidth management methods. The Q.50 protocol can be used with PBXs that support it. The proprietary Vmux-2120 bandwidth control can be used when the Q.50 protocol is not supported. Bandwidth management is available when using the TDM ports of Vmux-2120 as the uplink.

SUPER TANDEM

In super-tandem applications, where calls are routed through several Vmux-2120 gateways, the intermediate Vmux-2120 gateways sense that the voice has already been compressed by another Vmux-2120, and thus do not uncompress and then recompress the data as it passes through them. This feature ensures that voice is compressed and decompressed only once (at the terminating Vmux-2120 gateways), avoiding voice degradation or delay.

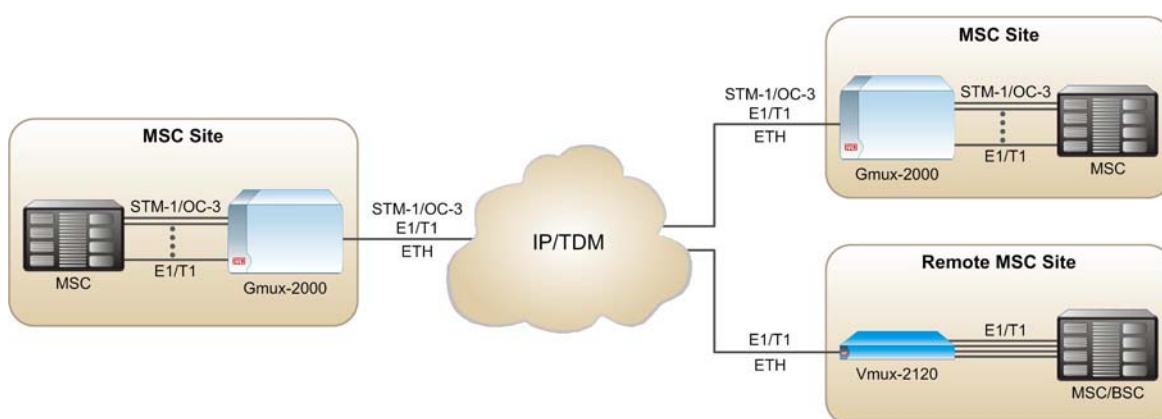


Figure 1. Vmux-2120 in Cellular Application

VOICE COMPRESSION

You can order the Vmux-2120 unit with 4, 8, 12 or 16 E1/T1 ports. The device compresses the timeslots received from the PBX E1/T1 trunks, using standard algorithms and silence suppression. The compressed payload bytes are then encapsulated into a TDMoIP packet and forwarded to the main link.

Vmux-2120 supports a wide range of voice compression codecs (ITU-T Rec. G.723.1 for 5.3 and 6.4 kbps, and G.729 for 8 kbps), Adaptive Multi-Rate (AMR) narrow-band codecs standardized by the European Telecommunications Standards Institute (ETSI) for GSM cellular systems), as well as 64 kbps PCM codecs per ITU-T Rec. G.711 (A-law and μ -law).

Advanced digital signal processing techniques ensure bandwidth-efficient, highly-reliable service, unaffected by the use of voice compression. These techniques include silence suppression, built-in echo cancellation of 128 ms per channel, selectable handling of inband signaling, fax and modems and more.

QOS SUPPORT

The Ethernet ports comply with all the relevant Ethernet LAN standards, such as IEEE 802.3 and 802.3u. They provide reliable, high Quality of Service (QoS), by optional VLAN tagging and priority labeling according to IEEE 802.1D&Q.

The user can configure the Type of Service (ToS) of the outgoing IP packets. This allows an en-route Layer 3 router or switch that supports ToS (or Diffserv), to give higher priority to Vmux-2120 IP traffic for delay-sensitive applications.

An assigned, IANA-registered UDP socket number for TDMoIP packets simplifies flow classification through switches and routers.

To transfer voice as well as 10/100 Mbps Ethernet data over an uplink with limited bandwidth (such as for satellite applications), the ingress data rate on both Ethernet ports is limited to one of several values between 128 kbps and 8 Mbps.

SYSTEM CLOCK

The clock propagation feature gives the user the flexibility to choose between two different clock modes. You can either define a separate clock for each TDM port or synchronize all the connected TDM systems by defining one system clock from one original source.

In addition, a backup source may be configured for the system clock, the Fallback clock. This means that you can configure several links as clock sources on the same priority level. Any of the connected links can provide the system clock source. The backup system is used only when there are no functioning links at the master system.

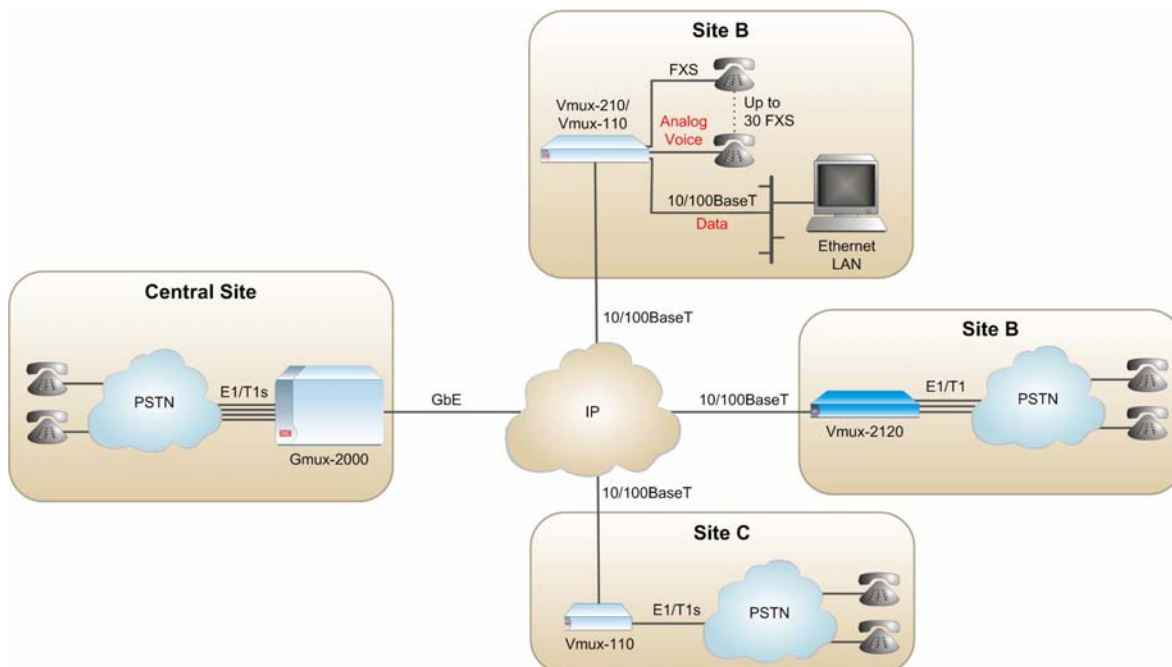


Figure 2. Voice Trunking over IP in an Any-to-Any Point Topology

Vmux-2120

Voice Trunking Gateway

MANAGEMENT

Vmux-2120 can be configured and monitored via a local ASCII terminal, Telnet/SSH or RADview (RAD's network management system).

All Vmux-2120 operating parameters are configured using simple, menu-based software. Upgrade or backup software can be uploaded and downloaded via TFTP.

Since Vmux-2120 internal control unit has its own IP address, the Ethernet port can also be used for connecting to management systems running over Ethernet networks. Management systems connected to a local unit's Ethernet port can also manage a remote unit, inband (see *Figure 3*).

The LAN traffic connected to the Ethernet port can be inhibited to prevent LAN data bursts from monopolizing the TDM link bandwidth and disrupting voice traffic. This ensures that the link bandwidth will be utilized for voice (and optionally management) traffic only.

For system security, Vmux-2120 provides three different levels of users: Monitor, Technician and Administrator. Up to 20 different usernames with passwords can be defined.

DIAGNOSTICS

Vmux-2120 features local (internal) and remote (external) loopbacks on E1/T1 links. The user can also perform tone injection towards the local PBX. In addition, a ping utility is included to confirm IP connectivity to remote units.

FULLY REDUNDANT SYSTEM

The Vmux-2120 chassis includes one main card (CPU) and two power supplies. An additional main card may be ordered for redundancy.

Thanks to its redundant card and redundant power supplies, the 1U-high platform complies with the most stringent carrier-grade requirements. The system enables hot-standby, hot-swappable card redundancy mode of work.

Furthermore, the redundant card enables hitless software upgrade.

UPLINK REDUNDANCY

The uplink redundancy feature enables you to configure the two TDM and the two Ethernet uplinks in any pattern of redundancy to ensure extended backup for the uplink channels.

Uplink redundancy is reached by applying BFD (Bi-directional Forwarding Detection), a mechanism that provides low-overhead, short-duration detection of failures in the path between two engines.

INVEST-AS-YOU-GROW

Vmux-2120 can be ordered with only some of the voice ports activated. Licenses may be added to open unused ports at any given time, enabling easy future expansion.

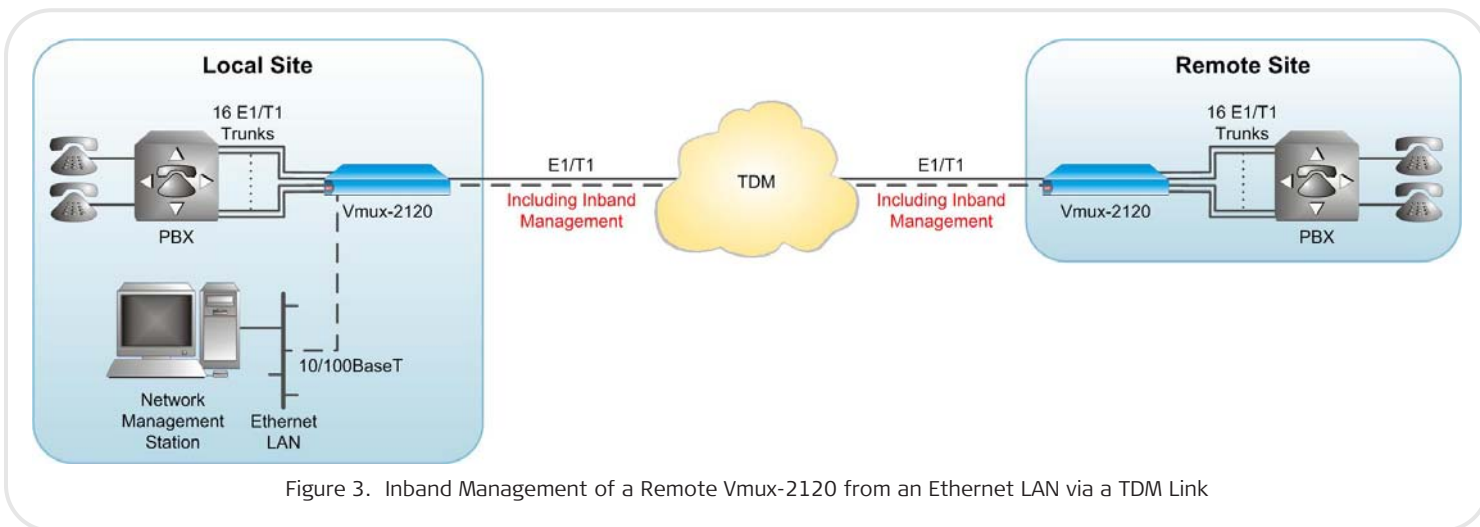


Figure 3. Inband Management of a Remote Vmux-2120 from an Ethernet LAN via a TDM Link

Specifications

ETHERNET PORTS

Number of ports

2 (Network and User or two redundant uplink ports)

Compliance

IEEE 802.3, 802.3u, Ethernet, 802.1D&Q

Data Rate

10 or 100 Mbps, half duplex or full duplex, autonegotiation

Ingress Data Rate Limit

Can be independently set for each Ethernet port: 128 kbps, 256 kbps, 512 kbps, 1 Mbps, 2 Mbps, 4 Mbps, 8 Mbps, or unlimited

Statistics

According to RFC 2819, RMON-MIB

OR

According to RFC 3638 or RFC 3635:

- Received frames – Correct Frames, Correct Octets, Alignment Errors, FCS Errors
- Transmitted frames – Correct Frames, Correct Octets, Single Collision, Multiple Collision, Deferred Transmission, Late Collision, Carrier Sense Error

Range

Up to 100m (328 ft) on UTP Cat.5 cable

Connector

RJ-45

Indicators

ACT (green) – Blinking when traffic is detected over the Ethernet line
LINK (green) – On when Ethernet line is OK

E1 UPLINK

Number of Ports

2 (one active, one backup or two active)

Compliance

ITU-T Rec. G.703, G.704, G.706, G.732, G.823

Data Rate

2.048 Mbps (per port)

Line Type

G.732N
G.732N with CRC-4
G.732S
G.732S with CRC-4
Unframed

Line Code

HDB3

Receive Signal Level

With LTU: 0 to -43 dB
Without LTU: 0 to -12 dB

Transmit Signal Level

Balanced: $\pm 3V$ ($\pm 10\%$)
Unbalanced: $\pm 2.37V$ ($\pm 10\%$)

Timing

Internal or loopback

Jitter Performance

Per ITU-T G.823

Interface Type

Balanced 4-wire, 120 Ω
Unbalanced 4-wire, 75 Ω (via adapter cable)

Indicators (per port)

LOC (red): Local Sync Loss on port
REM (yellow): Remote Sync Loss on port

Connectors (per port)

RJ-45 balanced

Note: CBL-RJ45/2BNC/E1 adapter cable is available for converting each E1 port RJ-45 connector into a pair of BNC connectors for unbalanced coax interface (see Ordering).

T1 UPLINK

Number of Ports

2 (one active, one backup or two active)

Compliance

ANSI T1.403, AT&T TR-62411, ITU-T Rec. G.703

Data Rate

1.544 Mbps (per port)

Line Type

SF
ESF
Transparent

Line Code

AMI, B8ZS

Receive Signal Level

With CSU: 0 to -36 dB
Without CSU: 0 to -30 dB

Transmit Signal Level

With CSU: 0, -7.5, -15, or -22.5 dB
Without CSU: $\pm 2.7V$ ($\pm 10\%$) at 0-655 ft

Timing

Internal or loopback

Jitter Performance

Per AT&T TR-62411

Interface Type

Balanced 4-wire, 100 Ω

Indicators (per port)

LOC (red): Local Sync Loss on port
REM (yellow): Remote Sync Loss on port

Connectors (per port)

RJ-45

Vmux-2120

Voice Trunking Gateway

VOICE PROCESSING

Compression Algorithms

G.723.1 (5.3 or 6.4 kbps)
G.729A (8 kbps)
AMR (4.75 kbps, 5.15 kbps, 5.90 kbps,
6.70 kbps, 7.40 kbps, 7.95 kbps,
10.20 kbps and 12.20 kbps)
G.711 (A-law or μ -law)

Silence Suppression

G.723.1A, G.729B

Echo Cancellation

128 ms per channel as per G.165 and
G.168

Fax Relay

Group III, 4.8, 9.6, 14.4 kbps

Voice Band Data

Transparent support for modems and faxes

E1 VOICE PORTS

Number of Ports

(according to ordering)
4 (124 channels max)
8 (248 channels max)
12 (372 channels max)
16 (496 channels max)

Compliance

ITU-T Rec. G.703, G.704, G.706, G.732,
G.823

Data Rate

2.048 Mbps (per port)

Line Type

G.732N
G.732N with CRC-4
G.732S
G.732S with CRC-4

Line Code

HDB3

Receive Signal Level

With LTU: 0 to -43 dB
Without LTU: 0 to -12 dB

Transmit Signal Level

Balanced: $\pm 3V$ ($\pm 10\%$)
Unbalanced: $\pm 2.37V$ ($\pm 10\%$)

Jitter Performance

Per ITU-T G.823

Interface Type

Balanced 4-wire, 120 Ω
Unbalanced 4-wire, 75 Ω (via adapter cable)

Indicators (per port)

LOC (red): Local Sync Loss on port
REM (yellow): Remote Sync Loss on port

Signaling Support

Transparent CAS, including R2 and E&M
Transparent CCS, including ISDN, QSIG and
SS7
Clear channel

Connectors (per port)

RJ-45 balanced

*Note: CBL-RJ45/2BNC/E1 adapter cable is available
for converting each E1 port RJ-45 connector into a
pair of BNC connectors for unbalanced coax
interface (see Ordering).*

T1 VOICE PORTS

Number of Ports

(according to ordering)
4 (96 channels max)
8 (192 channels max)
12 (288 channels max)
16 (384 channels max)

Compliance

ANSI T1.403, ITU-T Rec. G.703

Data Rate

1.544 Mbps (per port)

Line Type

D4, ESF

Line Code

AMI, B8ZS

Receive Signal Level

With CSU: 0 to -36 dB
Without CSU: 0 to -30 dB

Transmit Signal Level

With CSU: 0, -7.5, -15, or -22.5 dB
Without CSU: $\pm 2.7V$ ($\pm 10\%$) at 0-655 ft

Jitter Performance

Per AT&T TR-62411, G.824

Interface Type

Balanced 4-wire, 100 Ω

Indicators (per port)

LOC (red): Local Sync Loss on port
REM (yellow): Remote Sync Loss on port

Connectors (per port)

RJ-45 balanced

CONTROL PORT

Compliance

RS-232/V.24 (DCE)

Data Rate

9.6, 19.2, 38.4, 57.6, or 115.2 kbps

Connector

DB-9, female

ALARM RELAY PORT

Dry Contacts

1A, 60 VDC max.
30 VSC, 60W max.

Connector

DB-9, female

DIAGNOSTICS

Uplinks

IP Diagnostics:

- Performance monitoring
- LAN statistics
- Pings

E1/T1 Diagnostics: local and remote
loopbacks

Voice Compression Ports

Local and remote loopback per E1/T1
channel

Tone injection towards local side:

- Per timeslot
- Per entire E1/T1 channel
- On all E1/T1 channels simultaneously

GENERAL

System Indicators

TST (yellow):

- On: test is running
- Flashes: system is booting

ALM (red): alarm is present in system

PS 1 (green): On when Power Supply 1 is providing power

PS 2 (green): On when Power Supply 2 is providing power

MM1 (green): card in slot 1 is active

MM2 (green): card in slot 2 is active

Power

Input (*according to ordering*):

AC: 100 to 240 VAC, 50/60 Hz

DC: -48 (-36 to -72) VDC

Output (per PS module):

3.3 VDC: up to 15A

5 VDC: up to 5A

Power Consumption

One Power Supply: Max. 50W

Dual Power Supply: Max. 65W

Physical

Height: 4.4 cm (1.7 in)

Width: 44 cm (17.3 in)

Depth: 31.2 cm (12.2 in)

Weight: 5.5 kg (12.1 lb)






Environment

Operating Temperature: 0° to 50°C
(32° to 122°F)

Storage Temperature: -20° to 70°C
(-4° to 158°F)

Humidity: Up to 90%, non-condensing

Table 1. Vmux/Gmux Families

Feature	Vmux-2100 (Ver. 4.1)	Vmux-110 (Ver. 4.2)	Vmux-210 (Ver. 1.2)	Vmux-2120 (Ver. 1.1)	Gmux-2000 (Ver. 3.6)
					
Maximum compression ratio	16:1	16:1	16:1	16:1	16:1
Maximum number of compressed voice channels	496/384	30	30	496/384	3,472
Voice Interface	E1/T1	E1/T1/FXS/FXO/E&M	FXS	E1/T1	E1/T1/STM-1/OC-3
Network Interface	E1/T1, Serial, Fast Ethernet	E1/T1, Serial, Fast Ethernet	E1/T1, Serial, Fast Ethernet	E1/T1, Fast Ethernet	E1/T1/STM-1/OC-3, GbE, GbE/2
Scalability	✓				✓
Signaling	Any	Any	CAS only	Any	Any
Fax/Modem/DTMF Relay	✓	✓	✓	✓	✓
Management	ASCII terminal, Telnet, RADview-SC/Vmux	ASCII terminal, Telnet, RADview-SC/Vmux	ASCII terminal, Telnet, RADview-SC/Vmux	ASCII terminal, Telnet, RADview-SC/Vmux	ASCII terminal, Telnet, Web, RADview-SC/Vmux

Vmux-2120

Voice Trunking Gateway

Ordering

STANDARD CONFIGURATIONS

Vmux-2120/*/?/16E1/\$

Vmux-2120/*/?/16T1/\$

SPECIAL CONFIGURATIONS

Vmux-2120/*/?/12E1/\$

Vmux-2120/*/?/12T1/\$

Note: The Vmux-2120 chassis includes the redundant PS modules and one main card for voice compression services. For a redundant system (two main cards), order an additional main card.

Vmux-2120-M/?/@/\$

Redundant main card for Vmux-2120 (see Note above)

Vmux-2120-LIC/!

Upgrade license to activate additional voice ports

Note: To order upgrade licenses you need to specify your voice module's serial number.

Legend

- * Power supply type:
 - ACR Redundant, 100 to 240 VAC, 50/60 Hz
 - DCR Redundant, -48 (-36 to -72) VDC
- ? Main card (mandatory to indicate):
 - VC Voice Compression module
- \$ For 16-port devices only:
 - Partial activation by software key (Default=all ports activated):
 - 2SK 2 activated ports
 - 4SK 4 activated ports
 - 8SK 8 activated ports
 - 12SK 12 activated ports
- ! Software key for activating additional voice ports on an existing voice module:
 - 2SK Activate 2 additional voice ports
 - 4SK Activate 4 additional voice ports
 - 8SK Activate 8 additional voice ports

Note: You can order combinations of the above.

For example, to upgrade from 4 to 10 active ports, order license for activating additional 4 and another license for additional 2 voice ports.

SUPPLIED ACCESSORIES

- AC power cord (when AC power supply is ordered)
- DC adapter plug (when DC power supply is ordered)

RM-VMUX-2100/19

Hardware kit for mounting one Vmux-2120 unit into a 19-inch rack

OPTIONAL ACCESSORIES

VMUX-2100-PS/&

Power Supply Module

& Power supply type:

AC 100 to 240 VAC

DC -48 (-36 to -72) VDC

CBL-DB9F-DB9M-STR

Control port cable

CBL-RJ45/2BNC/E1

Interface adapter cable for converting one E1 port RJ-45 connector into a pair of BNC connectors for unbalanced coax interface

RM-VMUX-2100/23

Hardware kit for mounting one Vmux-2120 unit into a 23-inch rack

International Headquarters
 24 Raoul Wallenberg Street
 Tel Aviv 69719, Israel
 Tel. 972-3-6458181
 Fax 972-3-6498250, 6474436
 E-mail market@rad.com



12 avenue des prés
 78059 St Quentin en Yvelines
 Tel: 33 (0)1 77 55 03 00
 Fax: 33 (0)1 30 44 11 95
 E-mail: sales@cbnetworks.fr



data communications

The Access Company